

MEME



Figure 1: **Usage of MEME as of February 8, 2010.** The histograms show the number of different users submitting runs, the number of runs, the total cpu time of all runs, and the maximum number of runs for a single user on a month-by-month basis.

MAST

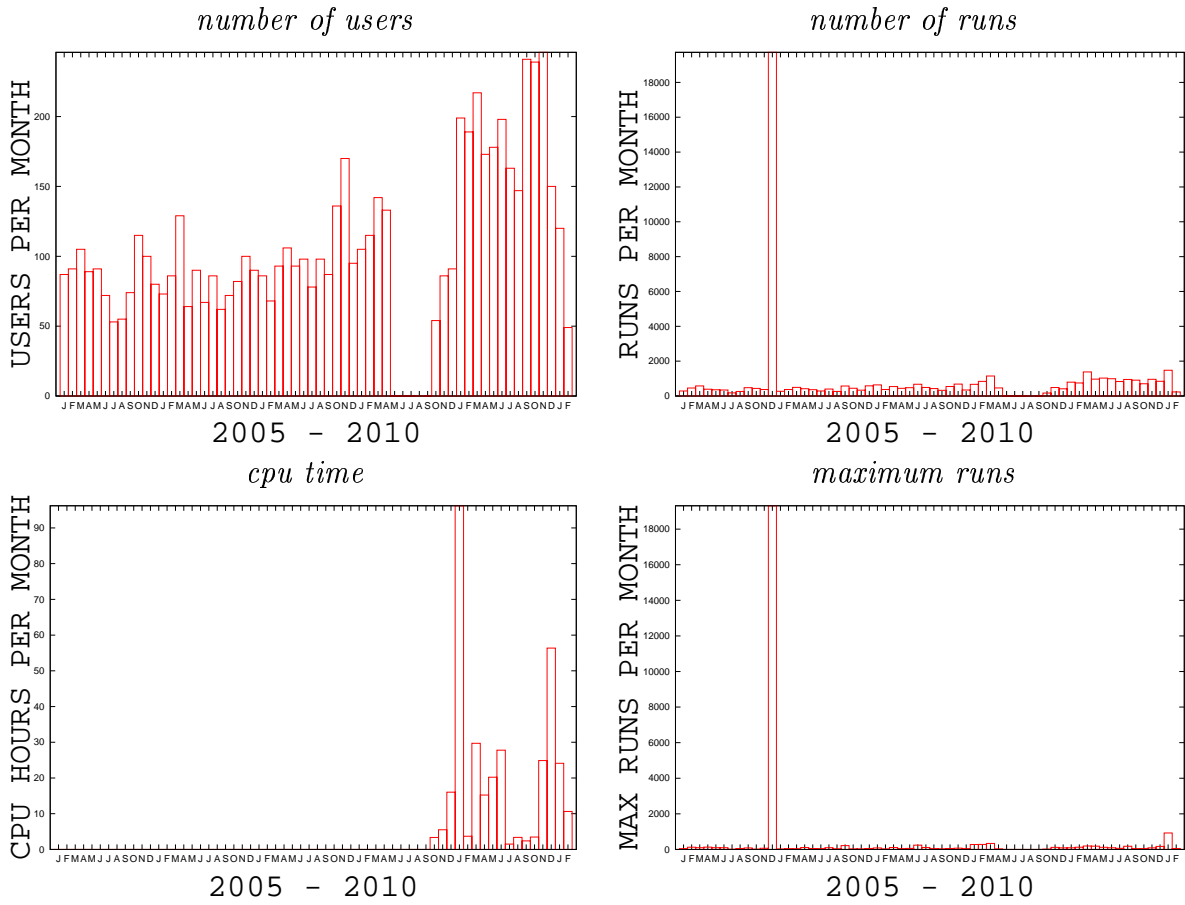


Figure 2: **Usage of MAST as of February 8, 2010.** The histograms show the number of different users submitting runs, the number of runs, the total cpu time of all runs, and the maximum number of runs for a single user on a month-by-month basis.

FIMO

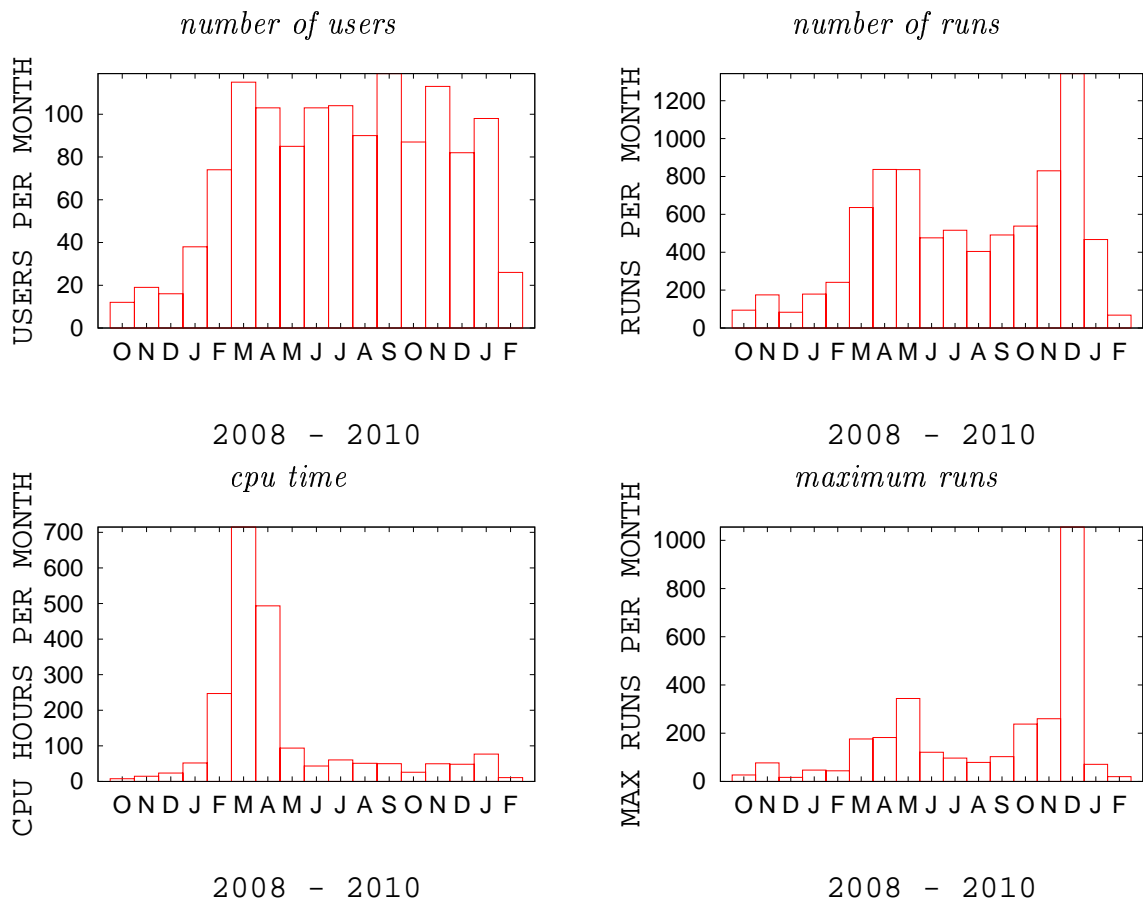


Figure 3: **Usage of FIMO as of February 8, 2010.** The histograms show the number of different users submitting runs, the number of runs, the total cpu time of all runs, and the maximum number of runs for a single user on a month-by-month basis.

GLAM2



Figure 4: **Usage of GLAM2 as of February 8, 2010.** The histograms show the number of different users submitting runs, the number of runs, the total cpu time of all runs, and the maximum number of runs for a single user on a month-by-month basis.

GLAM2SCAN

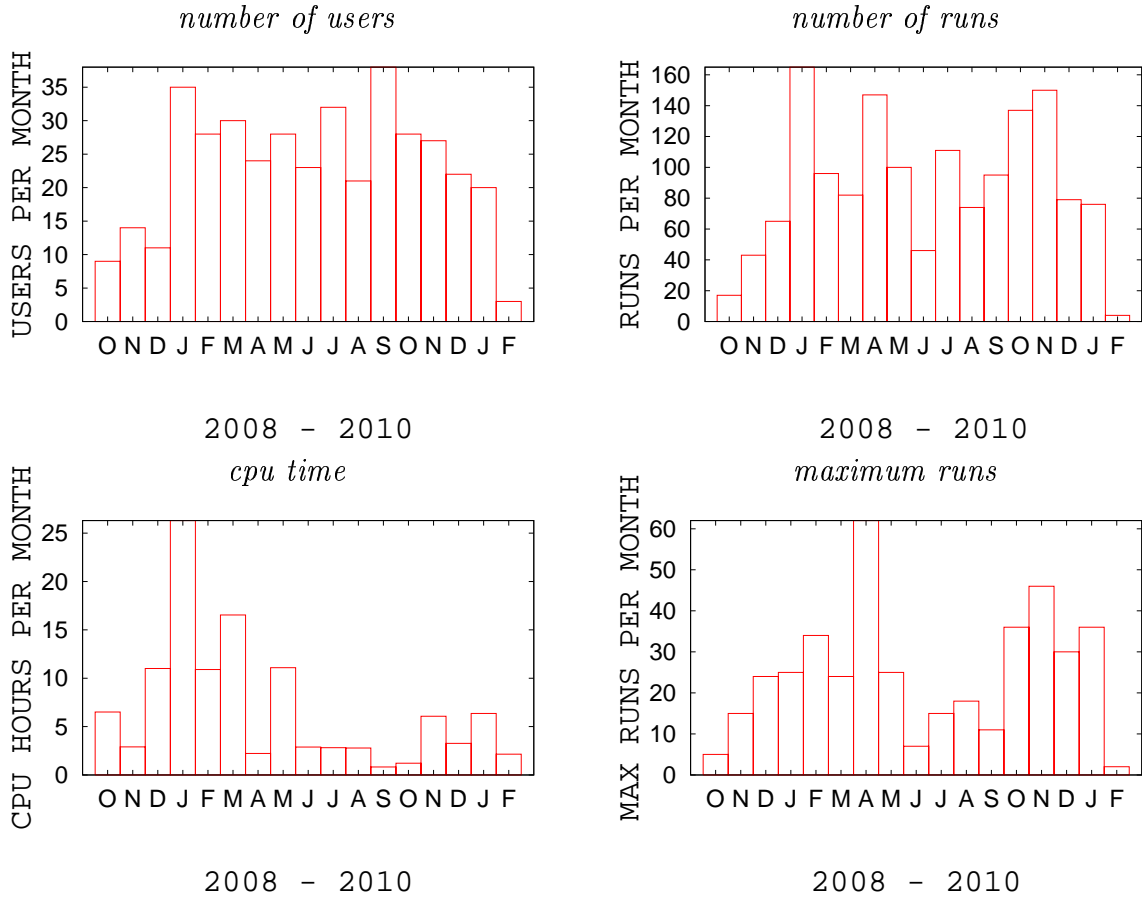


Figure 5: **Usage of GLAM2SCAN as of February 8, 2010.** The histograms show the number of different users submitting runs, the number of runs, the total cpu time of all runs, and the maximum number of runs for a single user on a month-by-month basis.

GOMO

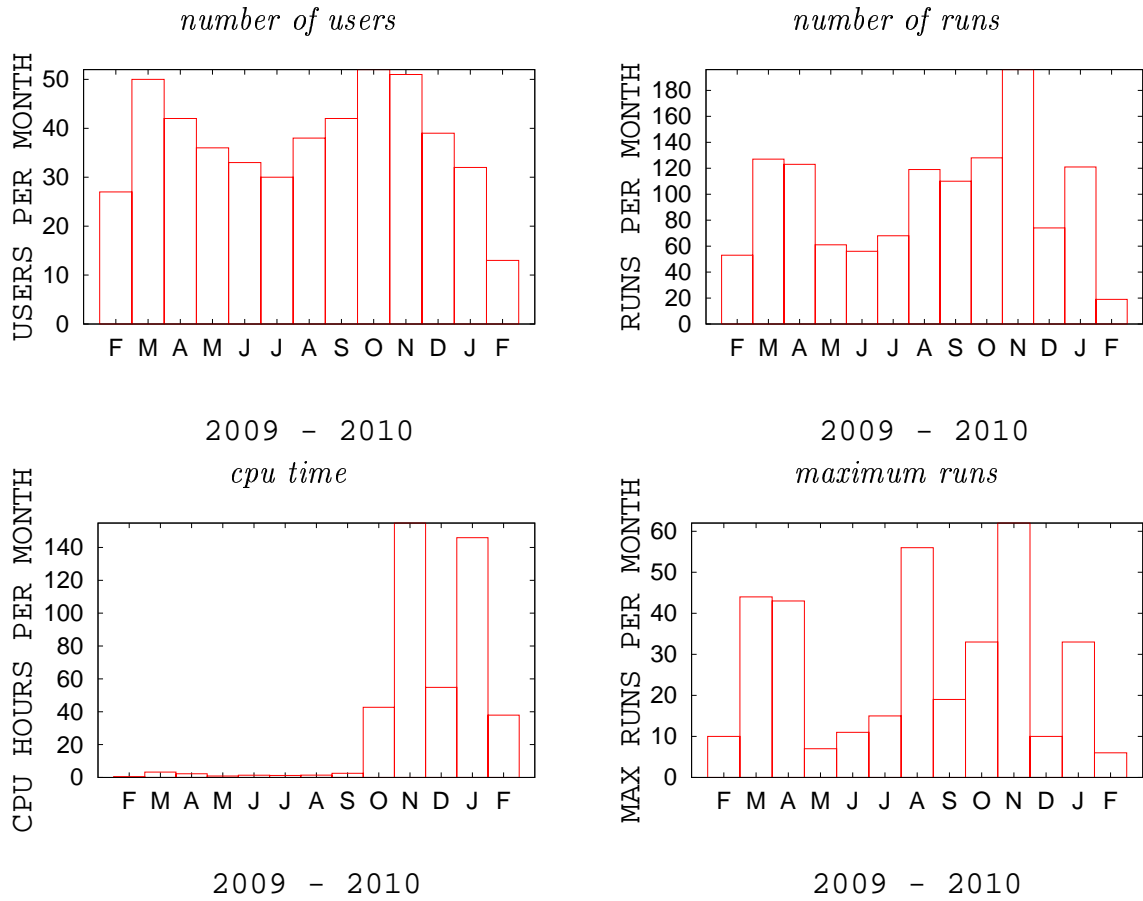


Figure 6: **Usage of GOMO as of February 8, 2010.** The histograms show the number of different users submitting runs, the number of runs, the total cpu time of all runs, and the maximum number of runs for a single user on a month-by-month basis.